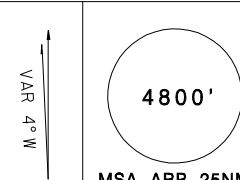
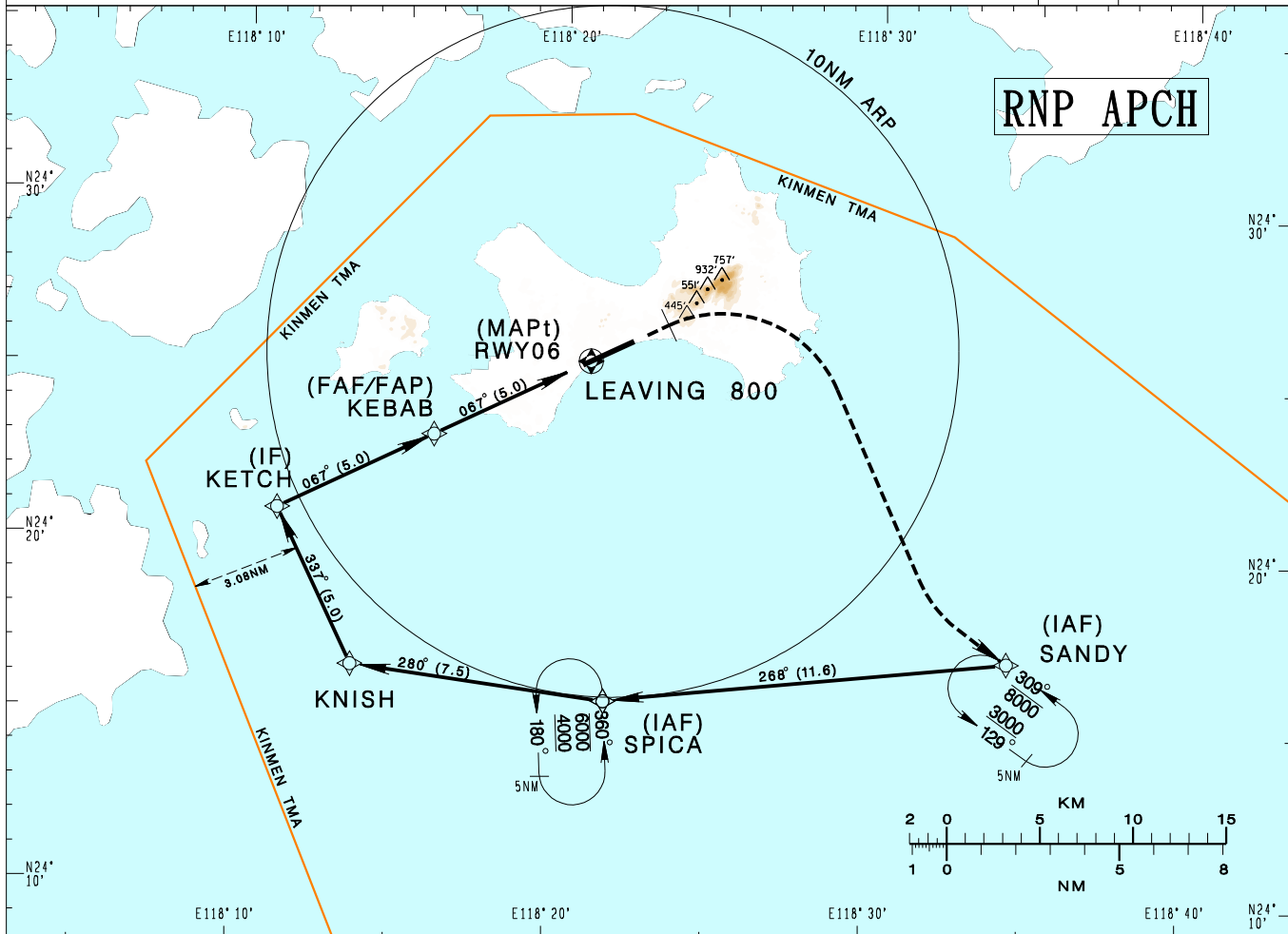


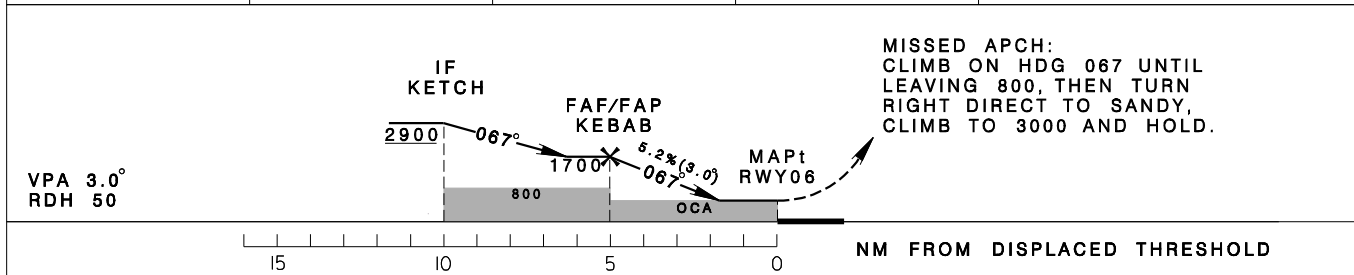
金門/尚義機場
KINMENSHANGYI AD

RCBS
RNP RWY06

| | | | | |
|--|---------------------------|--------------------|---|--------------------|
| KAOSIUNG APP 124.6 133.1 | KINMEN TWR 118.0 126.2 | ATIS 127.2 |  | |
| Apt Elev: 56' | Rwy06 DTHR Elev: 45' | Trans Level: FL130 | | Trans Alt: 11,000' |
| BEARINGS ARE MAGNETIC; DISTANCES ARE NAUTICAL MILES; ELEVATIONS, HEIGHTS IN FEET | | | | |



| | | | | |
|------|------|------|-----|--------------------|
| 5 | 4 | 3 | 2 | DIST (NM) to THR06 |
| 1700 | 1370 | 1060 | 740 | ADVISORY ALT |



| MINIMA (OCA IN FT, VIS IN M, OCH IN FT) | | | | | |
|---|-----------------------|--------------|--------------|----------------|----------------|
| CATEGORY | | A | B | C | D |
| LNAV/VNAV | STRAIGHT IN | 500/1400 455 | 520/1500 475 | 566/1700 521 | 599/1800 544 |
| | STRAIGHT IN (ALS OUT) | 500/2100 455 | 520/2200 475 | 566/2400 521 | 599/2500 544 |
| LNAV | STRAIGHT IN | 570/1400 525 | 590/1500 535 | 610/1800 555 | 630/1900 575 |
| | STRAIGHT IN (ALS OUT) | 570/2100 525 | 590/2200 535 | 610/2500 555 | 630/2600 575 |
| CIRCLING | | 720/2100 664 | 980/2800 924 | 1220/3700 1164 | 1220/4600 1164 |

NOTE

- CIRCLING NOT AUTHORIZED NORTH OF RUNWAY.
- MAX IAS AT KNISH/KETCH 210 KTS.
- BARO-VNAV NOT AUTHORIZED BELOW 0° C.
- DME/DME NOT AUTHORIZED.

CHANGES: NEW PAGE NUMBER